

Active cdc42 Monoclonal antibody  
 Catalog Number:NL23003

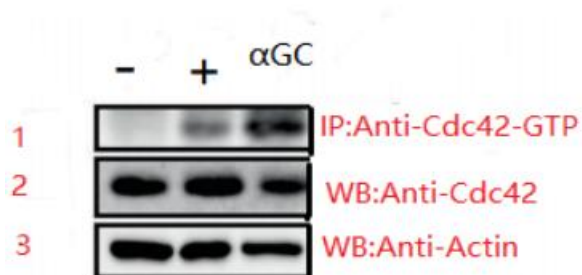
## Product Uses Include

Analysis of in vivo cdc42 activation levels  
 Detection of compounds and proteins that enhance cdc42 activity  
 Detection of compounds and proteins that inhibit cdc42 activity  
 The activity of cdc42 in cells (tissues) was studied qualitatively

## Product Description

Description	Anti-Active cdc42 Mouse Monoclonal Antibody
Another Name	Anti-cdc42-GTP Mouse Monoclonal Antibody
Catalog Number	NL23003
Size:	30 µl
Tested Applications:	IP , IHF IHC
Cited Applications:	IP , IHC , IF , FC ICC ICF IHF
Tested Reactivity:	Human , mouse Rat
Cited Reactivity:	Human , mouse Rat
Gene Symbol:	Cdc42
Immunogen :	Recombinant full length protein of active cdc42
Concentration:	1mg/ml
Host/Isotype:	mouse/IgG1
Class:	monoclonal
Type:	Antibody
Predicted mv:	21KDa
Observed mv:	21KDa
Uniprot:	p60953
Constituents:	PBS (without Mg <sup>2+</sup> and Ca <sup>2+</sup> ), pH 7.4, 150 mM NaCl, 50% glycerol
Storage Conditions:	Store at -20°C for one year after shipment
Background:	Small GTPases are a super-family of cellular signaling regulators. Cdc42 belongs to the Rho sub-family of GTPases that regulate cell motility, cell division, and gene transcription. GTP binding increases the activity of Cdc42, and the hydrolysis of GTP to GDP renders it inactive. GTP hydrolysis is aided by GTPase activating proteins (GAPs), while exchange of GDP for GTP is facilitated by guanine nucleotide exchange factors (GEFs).

## Tested Applications: IP/WB

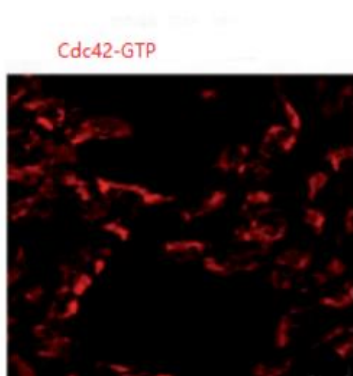


图三:细胞裂解物(25ul, 1mg/ml), 用 Anti- Actin rabbit polyclonal antibody (稀释 1:1000, Cat # 28002)进行蛋白印迹分析.

图一:  $\alpha$ GC 处理的细胞裂解物 (500ul, 1mg/ml) 与 ProteinA/G 和 Anti- Cdc42-GTP Monoclonal Antibody (1ul, 1mg/ml Cat #23003), 进行孵育, 用 Anti- Cdc42 rabbit polyclonal antibody (稀释比例, 1:1000, Cat # 24003)进行蛋白印迹分析

图二:细胞裂解物 (25ul, 1mg/ml), 用 Anti- Cdc42 rabbit polyclonal antibody (稀释 1:1000, Cat # 24003) 进行蛋白印迹分析.

## Tested Applications: IF



细胞组织用 Anti- Cdc42-GTP Monoclonal Antibody (Cat # 23003) 用免疫荧光染色 1:100 稀释, 孵育过夜的图像 (红色)